



Waterloo CMS Project

Academic Support Computer Representatives Meeting

2010-02-11

Overview



- New project direction
- Project team overview
- Major work underway

Project direction



Change in direction



Drupal pilot website

High-level requirements



1. ***Ease of maintenance*** (content contributors, website administrators, website designers, web developers, system administrators)
2. ***Responsiveness to changes in University's business environment*** (e.g. look and feel)
3. ***Distributed web-content management***
4. ***Responsiveness to changing technology environments & requirements*** (e.g. social collaboration & social networking)
5. ***Enhanced and extended functionality*** (e.g. modules/plugins)

Project team



- Team members
- Team structure (organizational chart)

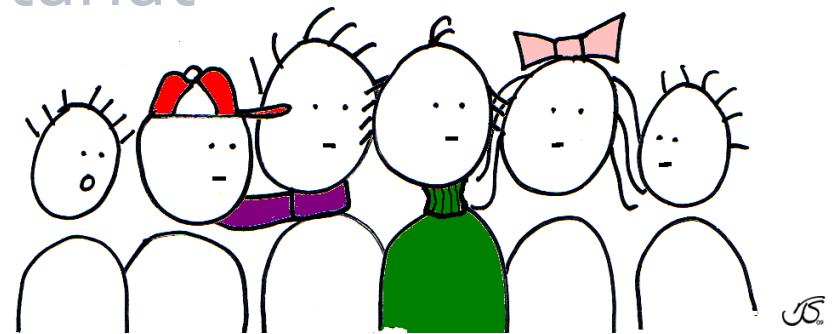
Team members



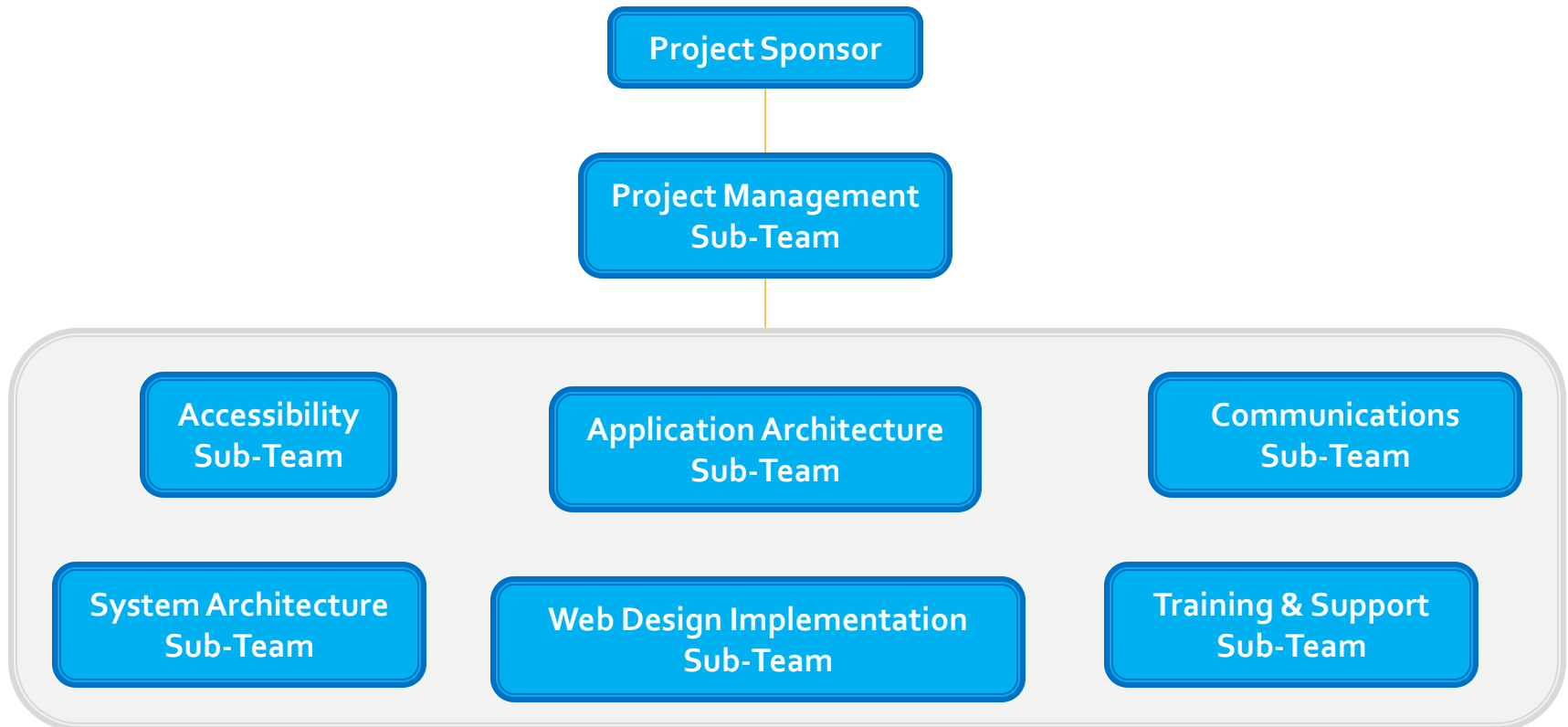
University-wide participation

- 17 core project team members
- 13 consultants to the project

AHS Arts CS Engineering Environment
CPA CEL (DCE) Housing HR IST Library
OPD Registrar's Secretariat



Organizational chart



Major work underway



1. Accessibility compliance
2. Team training
3. Sandbox (test sites)
4. Training resources
5. Content migration strategy
6. Pilot website
7. Requirements definition
8. Application architecture
9. Web Redesign Project collaboration
10. Project management

Accessibility compliance



- Legislative requirements
 - Web content accessibility (WCAG 2.0 – Level A)
 - User interface accessibility (ATAG 2.0)
- Application architecture/configuration
 - Modules (text editor)
 - Content types (form entry)

Team training



February 2010 – “Drupal Essential Training”

- Lynda.com – online courses & DVDs
- Sandbox – exercises from DVD

Sandbox



Drupal sandbox – February 2010

- Multi-site configuration
- Training space (DVD exercises)

Training resources



- Researching what's out there
- Listing useful resources
- Obtaining resources
- Creating documentation (research phase)
- Preparing training courses
- Developing training plan & strategy (rollout)

Content migration



SEW Course: Preparing Your Web Content

Content analysis (audit/inventory)

Pilot website



UWaterloo Web Resources website

- Central location housing/linking to resources
- Content needs assessments – Jan 2010
- Part of
 - CMS training plan & strategy (courses, links)
 - CMS adoption plan & strategy (CMS implementation & maintenance information)

Requirements definition



- Requirements
 - Documented (captured in spreadsheet)
 - Weighted (priority)
 - Based on previous CMS project
 - Being reviewed by project team (common vision)
 - Inform application architecture
 - Inform testing

Application architecture



- Research phase
 - Modules
 - Naming conventions
 - Taxonomy
 - Communications with other universities
 - Consulting services (implementation & support)

Web Redesign Project



- Regular meetings & communications
- CMS rollout with design templates
- Project dependencies & timelines
- Deliverables for CMS implementation

Project management



- Project management
 - Project Charter update
 - Project Management Plan
 - Work Breakdown Structure (WBS) revision
 - Schedule review & adjustments
 - University communications
 - web.uwaterloo.ca
 - Presentations/meetings

Questions



???